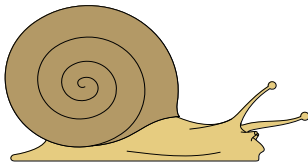


G2G COMMUNITIES CIC

SPOTTER GUIDS

MINI BEASTS

- **Snails**
- **Millipedes**
- **Centipedes**
- **Caterpillars**
- **Earwigs**
- **Flies**
- **Bees**
- **Dragonflies**
- **Beetles**
- **Ladybirds**
- **Mosquitoes**
- **Earthworms**
- **Spiders**

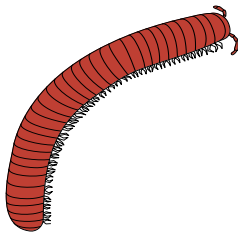


SNAILS

Snails live in damp places, among plants and under stones.

They are molluscs.

In very dry weather snails pull their bodies inside their shells and the slimy mucus forms a plug.



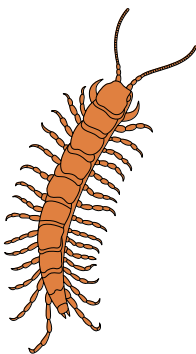
MILLIPEDES

There are about 8,000 different species of millipede.

They live in the soil and feed mainly on rotting plants.

Some can curl into balls!

Millipedes have two pairs of legs on each segment but most have about a hundred legs (despite their name meaning “thousand legs!”)

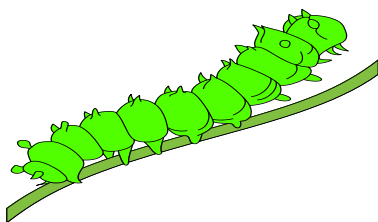


CENTIPEDES

Centipedes are fast hunters. They come out at night and feed on animals such as slugs, woodlice and earwigs.

They kill their prey with poison.

Giant centipedes over 30cm long live in rainforests.

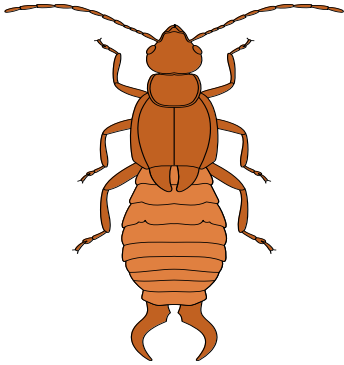


CATERPILLARS

Caterpillars are the young of butterflies and moths.

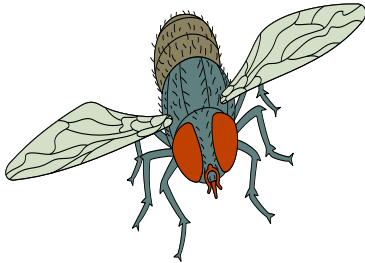
Caterpillars feed on leaves.

When the caterpillar is fully grown it becomes a pupa.



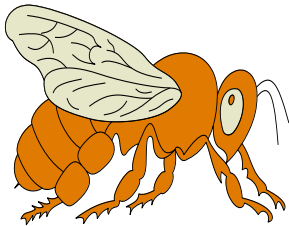
EARWIGS

Earwigs eat small flies or plant.
The pincers on their abdomen are for grasping their prey and defending themselves.



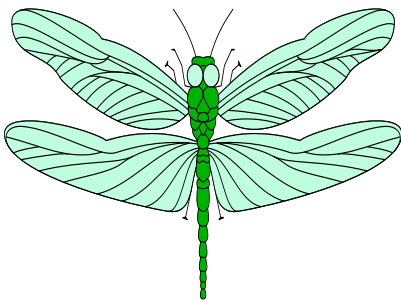
FLIES

There are many species of fly.
The larvae is known as a maggot.
Flies have one pair of wings, and a second very small pair called halteres, to help them balance.



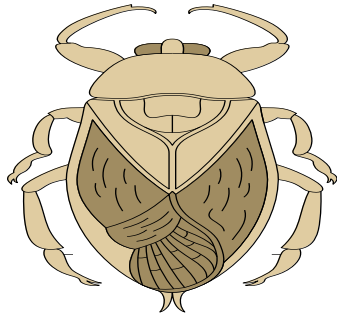
BEEES

Bees feed on pollen and nectar.
This is then turned into honey for the larvae.
Different bees have different jobs. Drones are males whose only job is to mate with the Queen. Then they die. The Queen lays eggs and the workers, who are undeveloped females, find food and look after the young.



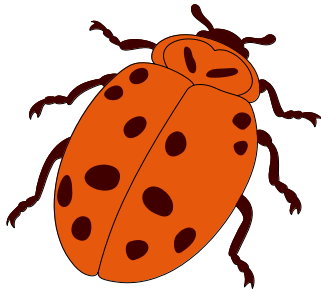
Dragonflies

Dragonflies and damsel flies live near water.
Their nymphs live in the water.
They are predators and eat small insects, even tadpoles and small fish!



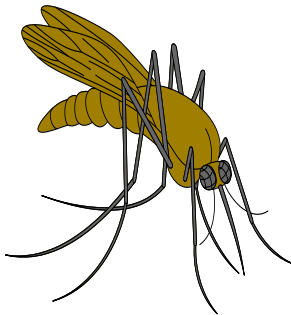
Beetles

There are more species of beetle than there are of plants or any other animals.
They have hard wing cases and their bodies are divided into three sections; head, thorax and abdomen.



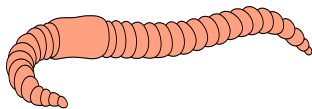
Ladybirds

Ladybirds are small beetles.
There are different species which have different numbers of spots.
The 13 spot ladybird is thought to be extinct



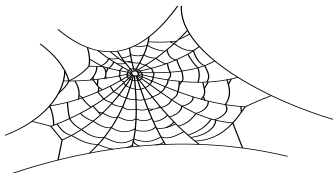
Mosquitoes

Mosquitoes are blood sucking flies.
Some mosquitoes carry the fatal malaria disease.
They are not thought to be harmful in England.



Earthworms

Earthworms live in soil all over the world.
Some grow to over 3m long!
They have segmented bodies with bristles to help grip the soil.
Earthworms eat rotting matter and soil.



Spiders

Spiders are very useful arachnids.
They eat flies and other insect pests.