

Rhyl - A New Dawn

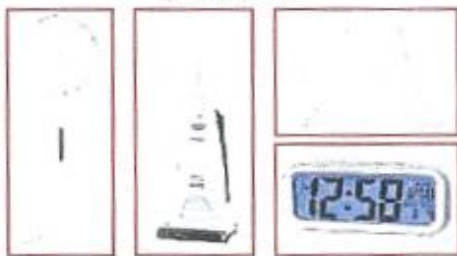
Special
Journal
supplement
2013

Splashing new centre

Rhyl Lightworks Co

For new or reconditioned vacs.
from £20 (most with 1 yr. guar. or longer)
Bags, belts and other appliance parts
Small appliance repairs
(brought into shop)
Sale of all electrical goods
Lighting and electrical heating specialists

We are between Door World and Tanning Shop
(set back a little)



Rear of 97 Vale Road, Rhyl. 361203
info@thelightworks.net
www.thelightworks.net

CYFREITHWYR
gamlins
SOLICITORS

PLANS are being drawn up for a £10-million aquatic centre to replace the Sun Centre.

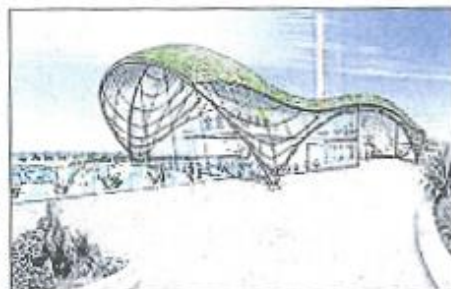
The iconic attraction is set to be replaced by a new centre built next to the town's Sky Tower as part of proposals Denbighshire County Council and development partners Alliance Leisure are working on.

The new centre will feature a six-lane 25m pool, learner pool, fun pool, changing area, 100-station family fitness suite and North Wales' first VertiGo climbing experience.

The plans pave the way for a significant upgrade of existing leisure/tourism facilities, create new jobs and stimulate further private sector investment in the town.

It will also address some long-standing concerns and aspirations including:

- The ongoing maintenance requirements for the Sun Centre building and its suitability as an attraction in the 21st Century
- The desire to create a new



aquatic offer to replace the Sun Centre

- Securing a positive future for the Rhyl Pavilion Theatre
- Securing a positive future for the Sky Tower

Currently the project is at Stage 2 of the delivery programme which includes the drawing up of a design brief and a detailed review leading to the planning application stage.

Tom Booty, Rhyl Going Forward Manager, said: "There is a huge amount of work going on to transform the town's fortunes and we

are aware that there is a need to ensure we are providing modern, efficient facilities that will enhance the quality of life for residents and will undoubtedly prove a major draw for visitors as well."

Councillor Joan Butterfield, Labour Group Leader and Rhyl member, said: "As Rhyl members, we fully support these proposals and see them as a positive step forward for the future of Rhyl as a vibrant and modern tourist destination as well as providing top class facilities for residents."

Back into work

G2G Communities CIC has been awarded WCA Gateway (ESF) funding to get people back into employment.

The 'Pop Up People - Back to

Business' project will use empty shops, market stalls and open spaces to encourage those unemployed to start their own business or experience what it is like to be self-employed.

It will also provide them with the necessary skills to take their business enterprise forward on completion of their programme.

Chris Ruane MP celebrates Rhyl success stories

■ FORMED in 1877, Rhyl Silver Band are a progressive, friendly contesting brass band, comprising of a good mixture of both adult and young players, who welcome new players of any standard.

Chris Ruane said: "The band has a great social scene, and undertakes engagements at a whole host of public and private events."

"A registered charity, dedicated to developing musical skills to ensure the longevity of a brass-band tradition in the community, I wish the band continuing success in the years ahead."

■ A CABLESKI system is to be built on Rhyl's iconic Marine Lake.

A 170 metre single-lane cableski system, power supply and control cabin will be built by Knightlys Fun Parks.

It will allow water skiing or wakeboarding with the skier's rope and handle pulled by an electrically driven cable.

■ Rhyl Miniature Railway offers a nostalgic experience suitable for children of all ages on Britain's oldest miniature line and enthusiasts have kept this going for decades.

The museum contains hands on exhibits, and there is a nature and heritage trail which opened in 2011. The railway is a testament to the volunteers who dedicate their time and energies to ensure that it continues to provide a novel tourist attraction, showcasing one of the prettiest parts of Rhyl.

■ G2G COMMUNITIES, who 'make people more employable by making learning more enjoyable' and their directors, Bill and Maria Lockitt, who are stalwarts of our community, working tirelessly to bring forward new projects which will help our town.

G2G Communities is working with LEGO Education on a community based LEGO Innovation Studio at the former Bee and Station Hotel in Rhyl.

Chris Ruane said: "This project will be groundbreaking for the UK and will inject an exciting new reason to visit Rhyl Town Centre and they will also become the very first occupants of the regenerated and re-named Bee and Station."